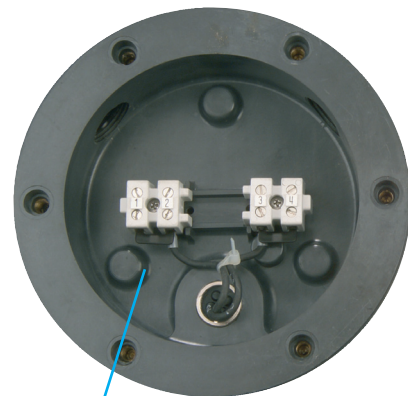


Ex-proof Rotating signal beacon dHR



mounting bracket 4VA stainless



terminal connection chamber „e“



II 2 G Ex d e IIC T5, T6 Gb
-20 °C ≤ Ta ≤ +75 °C/+40 °C
Zone 1, 2

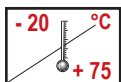
Features

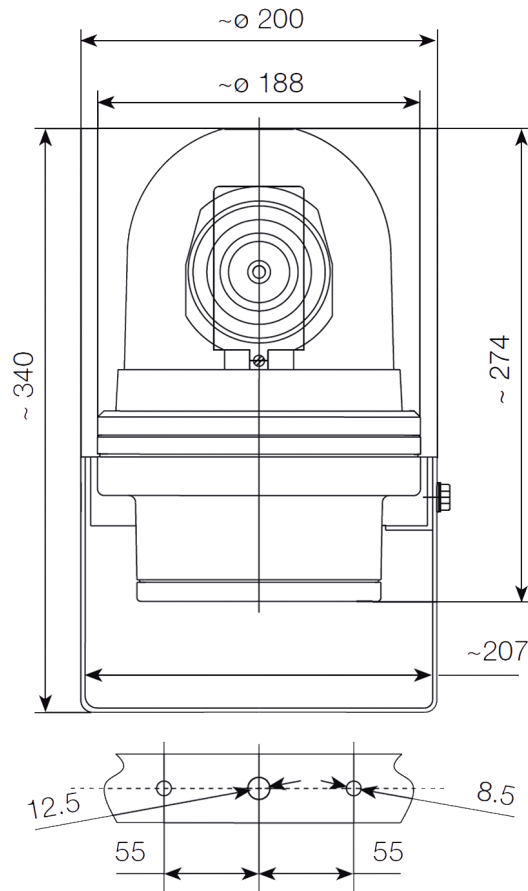
- Visual rotating signalling device with powerful 20 W halogene bulb and triple lens optical system for use in explosion endangered areas of zone 1 and 2
- Wear resistant friction gear
- Modular system – synthetic housing made of glassfibre reinforced polyester
- Lower weight – robust and corrosion proof design
- Flameproof chamber „d“ - terminal connection chamber in protection class increased safety „e“
- For continuous operation
- 4 lens colours
- Insulation class II – no equipotential bonding required



Technical data

Type	dHR
Housing, colour	glassfibre reinforced polyester black RAL 9005
Lens	polycarbonate (makrolon)
Colours	amber, red, blue, green (inner lens)
Terminal	1,5 mm ² fine wire 2,5 mm ² single wire
Light source	halogene bulb 35 W
Optics	triple lens optical system (fresnel lens)
Rotation speed	~ 60 rds/min
Cable entry	cable gland M20 x 1,5 and blind plug M20 x 1,5
Operation	continuous operation
Insulation class	II no equipotential bonding required
Weight	5,5 kg
Approval	PTB 02 ATEX 1098





Oder data

Type	Order No.	Denomination	Nominal voltage (V)	Voltage range (V)	Nominal current (A)
dHR1	350 00C 405	Ex-proof rotating signal beacon	24 V AC/DC	+/- 10%	0,900
	350 00C 410		110/120 V AC 50-60 Hz		0,200
	350 00C 413		230/240 V AC 50-60 Hz		0,100

Colour code for lens

1	amber	6	green
2	red		
5	blue		



C