



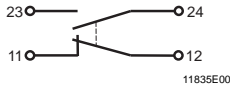
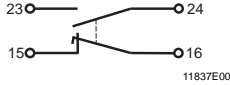
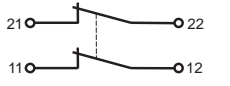
10764E00

- > Dimensions and characteristic values according to EN 50041
- > Replaceable contact in flameproof enclosure
- > Positive opening contacts
- > Wide range of actuators
- > All inserts may be displaced by 4 x 90°
- > Contact elements with low-action contact or overlapping slow-action contact
- > Extensively oil- and petrol resistant






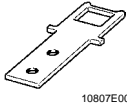

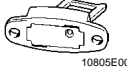
**WebCode 8074A**

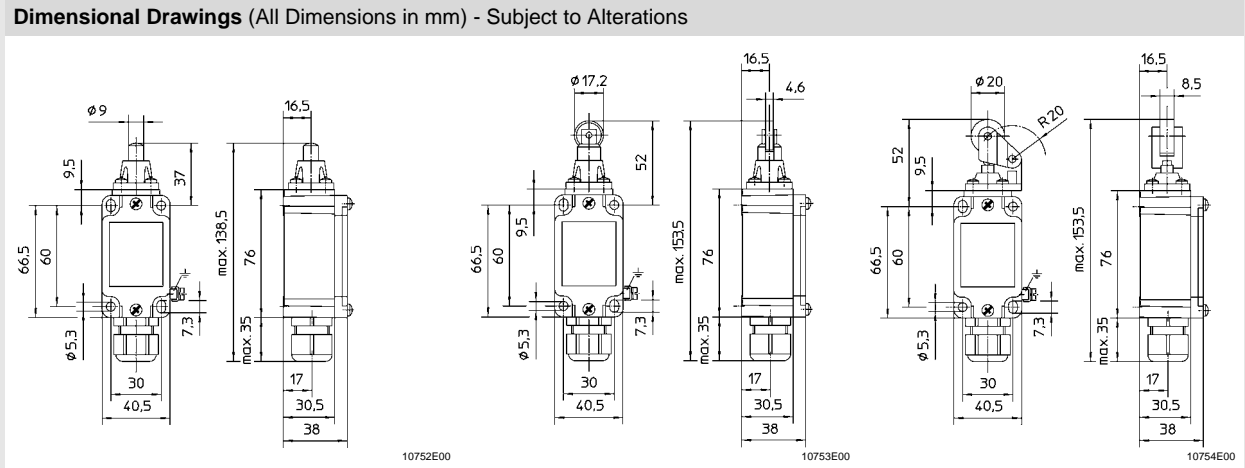
	ATEX / GOST					
Zone	0	1	2	20	21	22
For use in		x	x		x	x

Technical Data	
Explosion protection Europe (ATEX) Gas and dust	<p>BVS 05 ATEX E 007</p> <p>⊕ II 2 G Ex d e IIC T6 (Ta = - 20 ... + 40 °C)</p> <p>⊕ II 2 G Ex d e IIC T5 (Ta = - 20 ... + 60 °C)</p> <p>⊕ II 2 D Ex tD A21 IP67 T95°C (Ta = - 20 ... + 60 °C)</p> <p>⊕ II 2 D Ex tD A21 IP67 T80°C (Ta = - 20 ... + 40 °C)</p>
Certificates and approvals Certificates	ATEX, Kazakhstan (GOST-K), Russia (GOST-R), Belarus (GOST-B)
Electrical load Min. electrical load Max. electrical load	<p>24 V AC / DC, 10 mA</p> <p>AC-15: 250 V AC, 6 A</p> <p>DC-13: 230 V DC, 0.25 A</p>
Switching function	<p>Slow-action contact 1 NC + 1 NO</p>  <p>Slow-action contact 1 NC + 1 NO, overlapping</p>  <p>Slow-action contact 2 NC</p> 
Connection Ambient temperature Cable glands Cable dia. range Degree of protection	<p>Positive opening contacts according to IEC/EN 60947-5-1</p> <p>M3 screw type terminal, max. 1.5 mm<sup>2</sup></p> <p>see explosion protection data</p> <p>8161: 1 x M20 x 1.5</p> <p>6 ... 13 mm</p> <p>IP67 according to IEC/EN 60529</p>

Selection Table					
Version			Order number	PS	Weight kg
 10787E00	Extended plunger	Plunger of stainless steel	<b>8074/1-.-S</b>	17	0.340
 10786E00	Roller plunger	Roller of moulded plastic	<b>8074/1-.-RS</b>	17	0.342
 10784E00	Roller lever	Roller of moulded plastic	<b>8074/1-.-AR</b>	17	0.340
 10790E00	Swivelling roller lever	Roller of moulded plastic	<b>8074/1-.-HR311</b>	17	0.425
 10785E00	Adjustable roller lever	Roller of moulded plastic; rod of stainless steel	<b>8074/1-.-HV</b>	17	0.430
 10779E00	Actuating rod	Rod of moulded plastic	<b>8074/1-.-HH-K</b>	17	0.400
 10778E00	Spring rod	Spring of stainless steel	<b>8074/1-1-F2</b>	17	0.360
			<b>8074/1-3-F2</b>	17	0.360
 10782E00	Big swivelling lever	Roller of moulded plastic	<b>8074/1-.-HR312</b>	17	0.445
 10781E00	Forked roller lever	Roller of moulded plastic	<b>8074/1-1-GR</b>	17	0.465
			<b>8074/1-3-GR</b>	17	0.465
Order Number Supplement					
Switching function	1 NC + 1 NO	slow-action	<b>8074/1-1-...</b>		
	2 NC	slow-action	<b>8074/1-3-...</b>		
	1 NC + 1 NO	overlapping slow-action	<b>8074/1-5-...</b>		

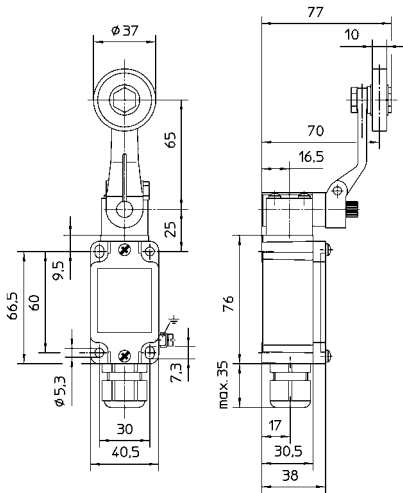
Selection Table					
Version			Order number	PS	Weight kg
 10780E00	Belt-alignment switch	Roller of moulded plastic	<b>8074/1-1-BSS</b>	17	0.460
 10783E00	Angled roller lever	Roller of moulded plastic	<b>8074/1-.-WR</b>	17	0.340
 10788E00	Safety switch	Separate actuator Note: Actuators for the safety switch have to be ordered separately.	<b>8074/1-1-ZB</b>	17	0.386
			<b>8074/1-3-ZB</b>	17	0.386
<b>Note: Actuators for the safety switch have to be ordered separately.</b>					
Order Number Supplement					
Switching function	1 NC + 1 NO	slow-action	<b>8074/1-1-...</b>		
	2 NC	slow-action	<b>8074/1-3-...</b>		
	1 NC + 1 NO	overlapping slow-action	<b>8074/1-5-...</b>		

Accessories and Spare Parts					
Designation	Illustration	Art. no.	PS	Weight kg	
Actuator	 10807E00	Straight 8074/1-.-ZB	<b>132311</b>	17	0.028
	 10806E00	Angled 8074/1-.-ZB	<b>132312</b>	17	0.037
	 10805E00	Adjustable 8074/1-.-ZB	<b>132313</b>	17	0.035



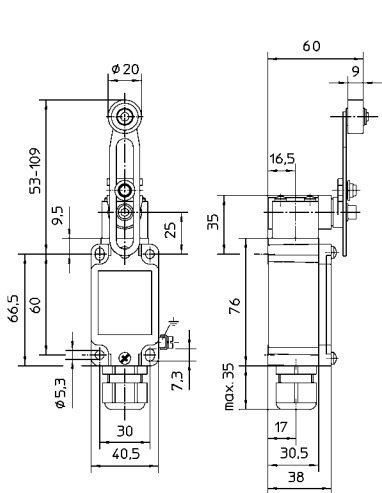
Dimensional Drawings (All Dimensions in mm) - Subject to Alterations

**8074/1--S**  
Extended plunger



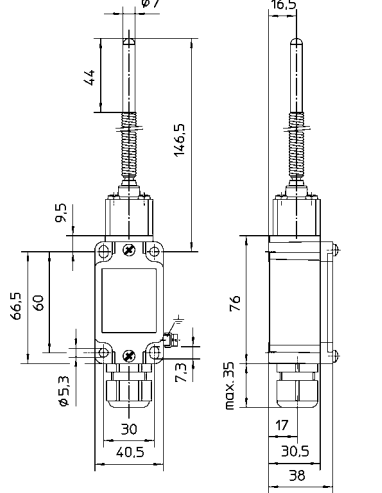
10759E00

**8074/1--RS**  
Roller plunger



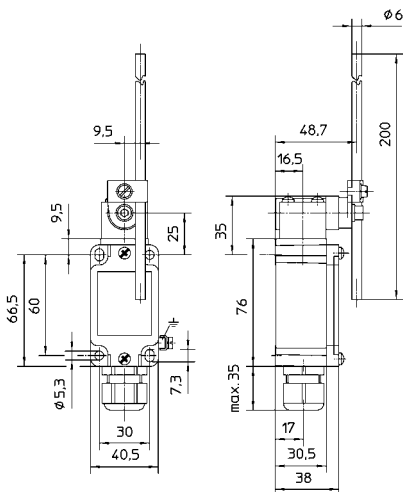
10756E00

**8074/1--AR**  
Roller lever plunger



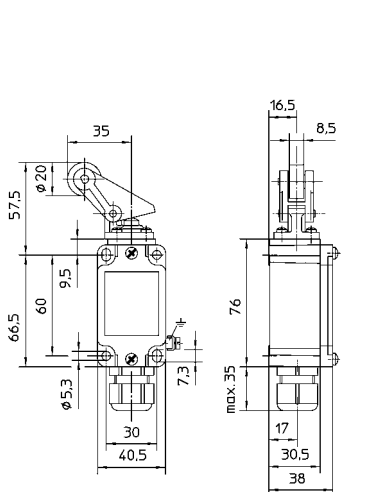
10758E00

**8074/1--HR312**  
Big swivelling lever



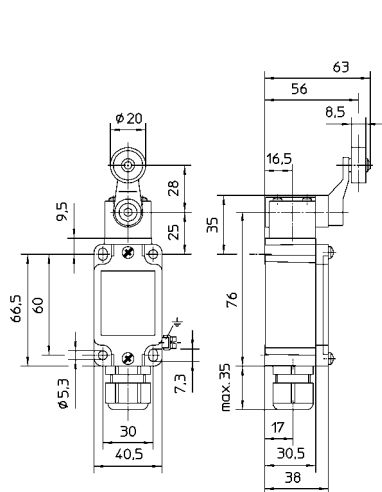
10757E00

**8074/1--HV**  
Adjustable roller lever



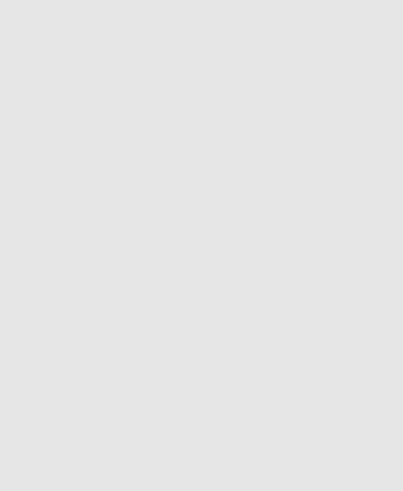
10762E00

**8074/1--F2**  
Spring rod actuator



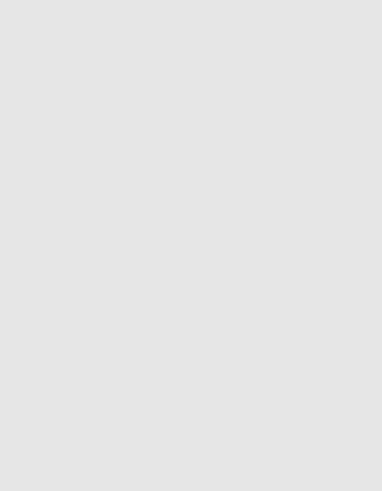
10755E00

**8074/1--HH-K**  
Actuating rod



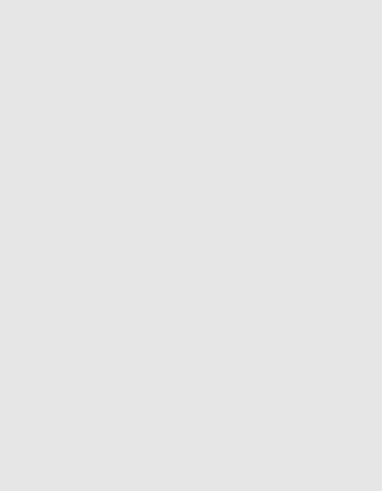
10757E00

**8074/1--WR**  
Angled roller lever



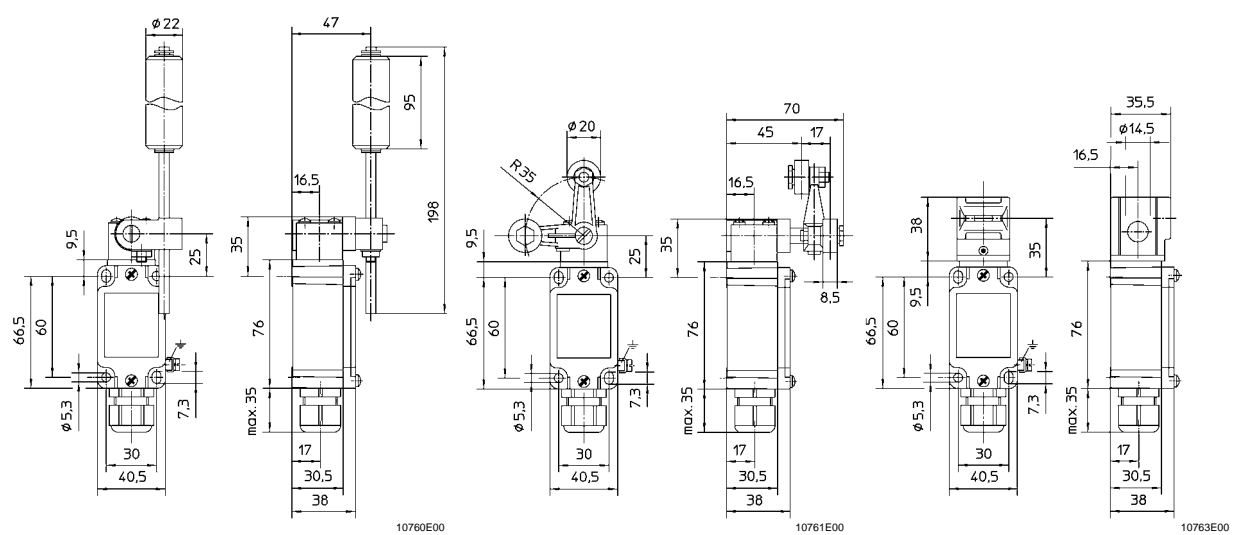
10762E00

**8074/1--HR311**  
Swivelling roller lever



10755E00

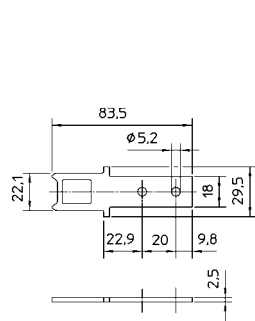
**Dimensional Drawings** (All Dimensions in mm) - Subject to Alterations



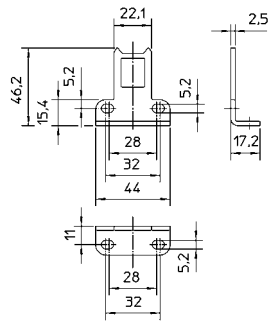
**8074/1--BSS**  
Belt-alignment switch

**8074/1--GR**  
Forked roller lever

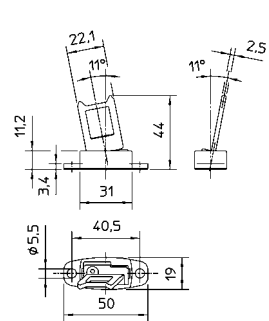
**8074/1--ZB**  
Safety switch



Straight actuator;  
for safety switch 8074/1--ZB



Angled actuator;  
for safety switch 8074/1--ZB



Adjustable actuator;  
for safety switch 8074/1--ZB